



**More efficient transport management
with the right TA system**

Is your transport management chaotic?

If a business (ERP) system is not designed to handle transport, fragmentation occurs:

- Each consignment has to be booked in the carrier's system
- A lot of different systems and processes to keep track of
- Inefficient working method
- Risk of incorrect deliveries
- Risk of increased transport costs



TA system provides consistency

A transport administration (TA) system is the solution to transport problems, as it provides consistency and precision.

- Standardised format – all freight is booked in the same way
- Can be integrated into the business system – or be used as a standalone service
- Greater control and oversight

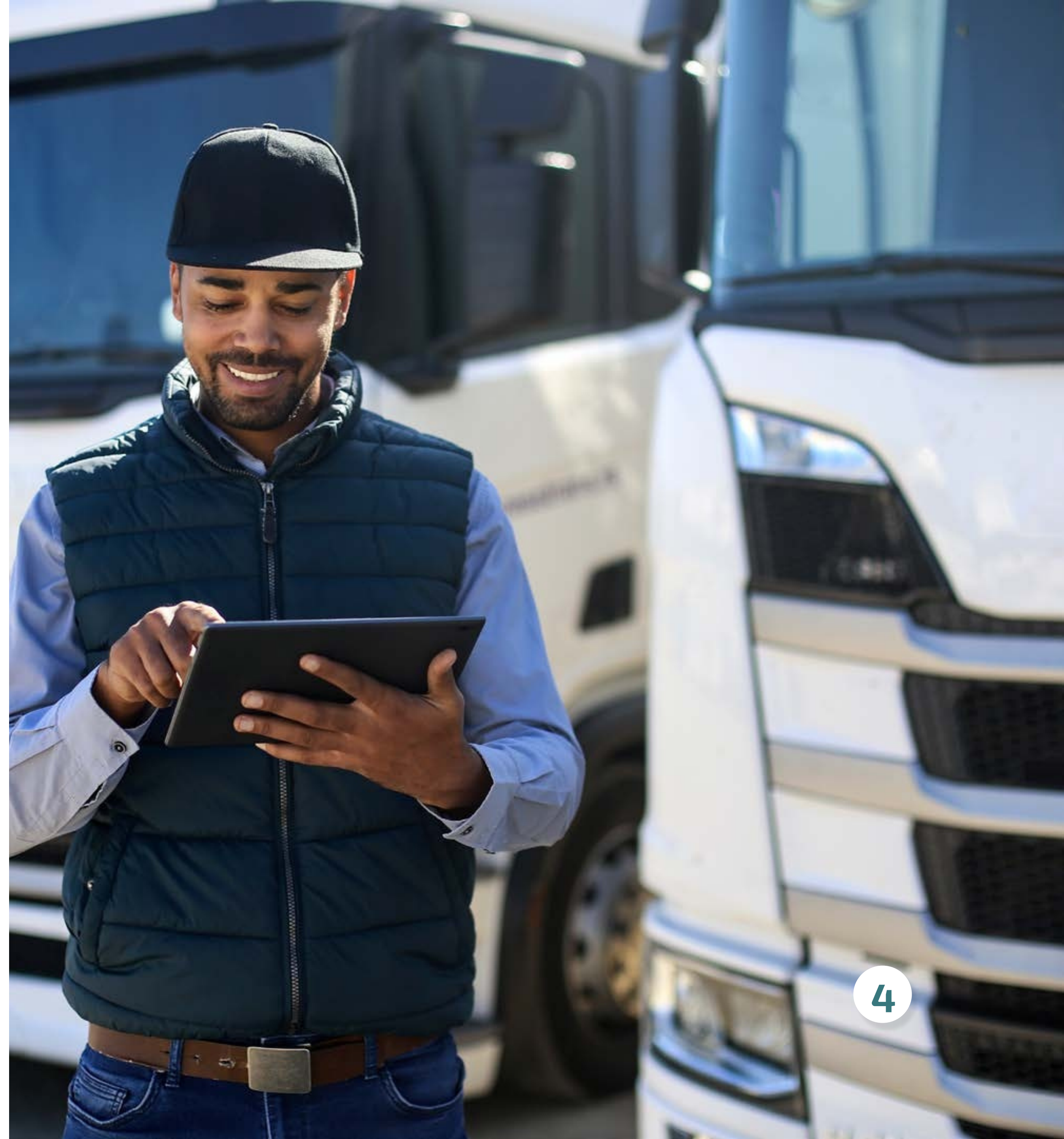


TIS Logistics

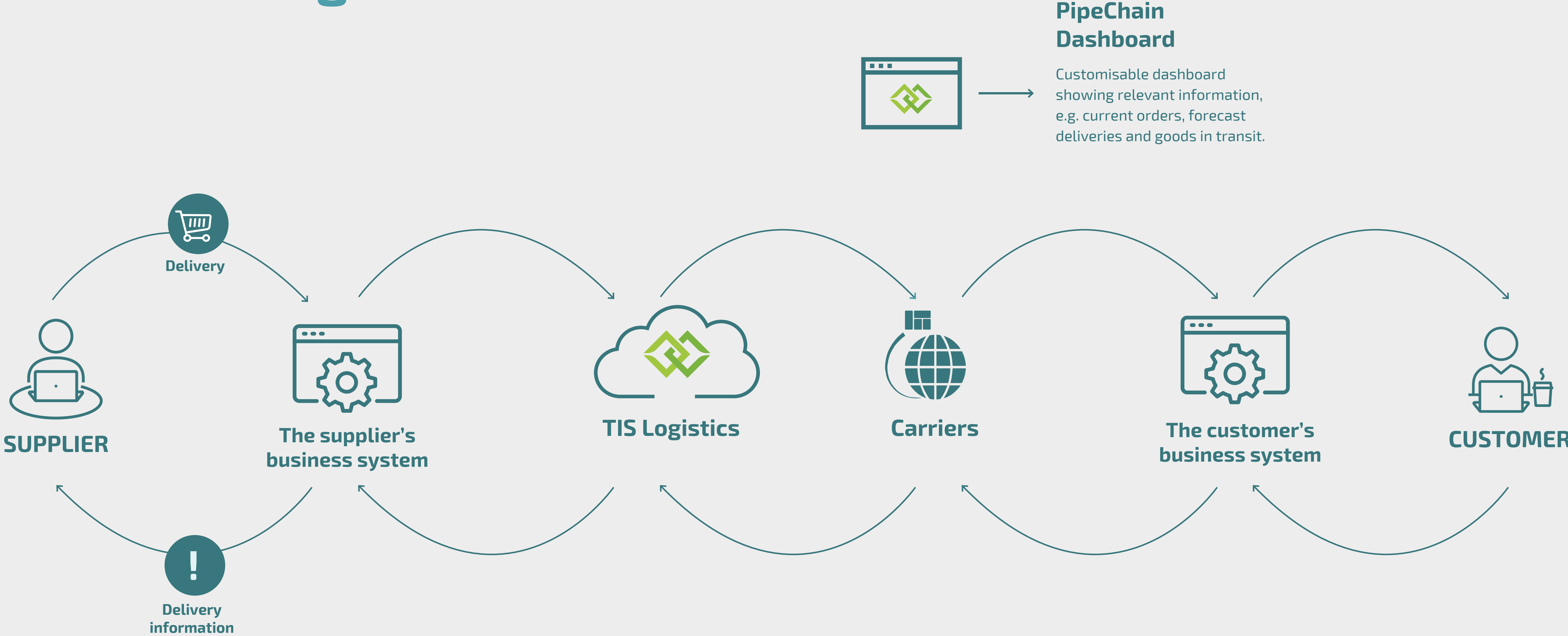
PipeChain has drawn on its extensive experience from logistics flows and systems integration in its development of TIS Logistics.

TIS Logistics is:

- A leading TA system
- Suitable for all companies and carriers
- Capable of handling the entire transport flow – inbound and outbound



How TIS Logistics works



TIS Logistics - modules

TIS Logistics is a complete TA system.
Needs-based configuration of TIS Logistics
using the following modules:

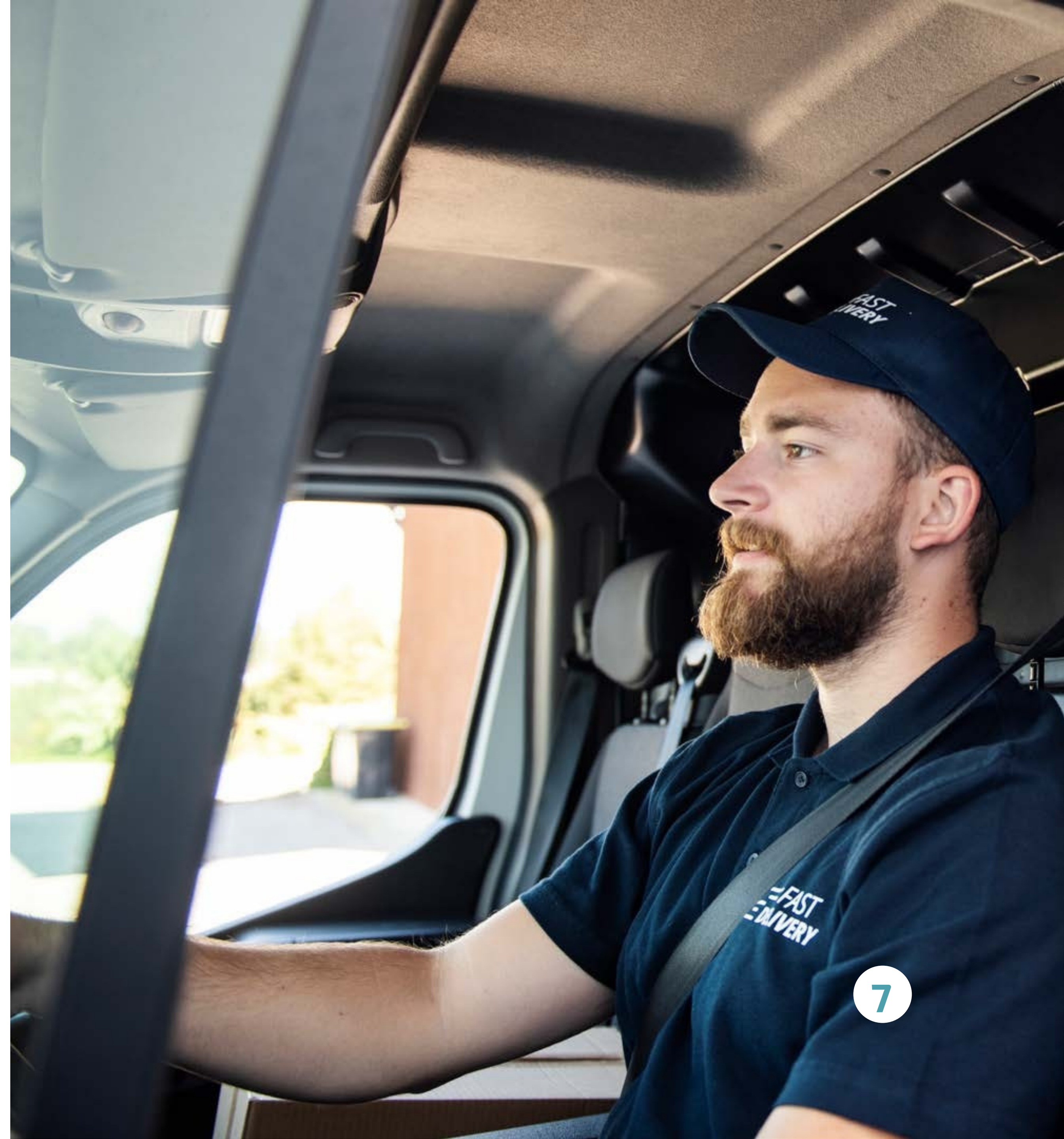
- ☑ **Outbound – outgoing transport**
- ☑ **Inbound – incoming transport, including returns**
- ☑ **Purchasing portal – transport of inputs**



6 benefits of TIS Logistics

TIS Logistics creates better business benefits, such as:

- ① Uniform transport management streamlines operations and frees up time
- ② Safeguards quality in time-critical flows
- ③ Control of the climate footprint by eco-friendly transportation options
- ④ Overview of complex transport chains
- ⑤ Integrated tracking and status updates
- ⑥ Compare different transport options and choose the most favourable



Well-presented dashboard

PipeChain provides a clear picture of current transport assignments and transport documents:

- Unshipped deliveries
- Uninvoiced deliveries
- Invoiced delivery history

Purchasing portal

In cases where the orderer of inputs is responsible for freight, a direct link is offered to the supplier's forwarding agents.

- Steers the supplier towards the right carrier and service
- Helps the supplier to book freight and generate freight documents and labels
- Track & Trace information enters the flow automatically

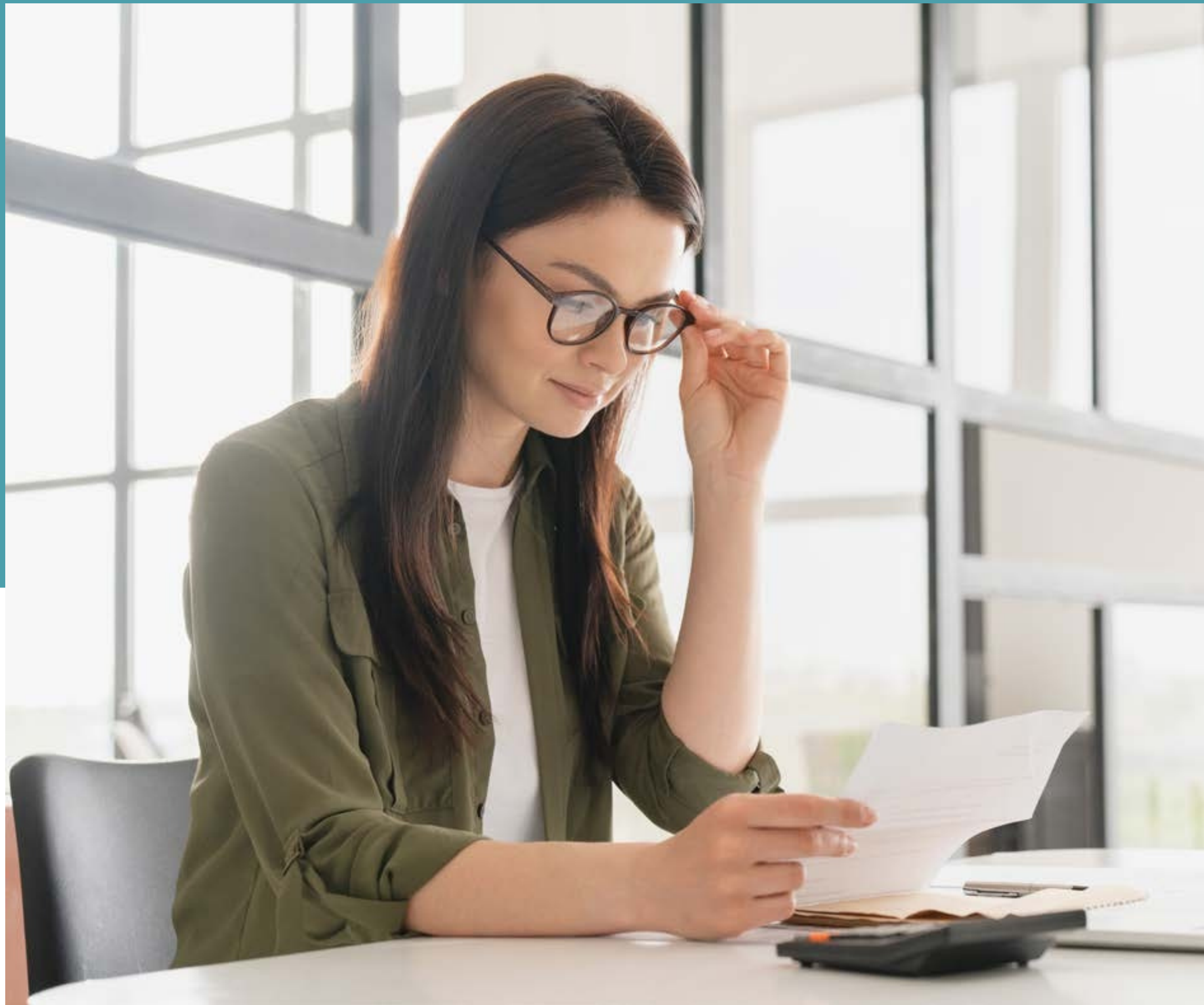
Customs management

TIS Logistics has built-in customs management for cross-border transport:

- Ensures compliance with national and EU (UCC) requirements
- Fulfils the requirements for electronic customs management
- Reduces the risk of errors
- Improved cost control



Invoicing



- Automatically generated data based on what was delivered
- The supplier only has to add any costs for packaging and transport fees, which streamlines the invoicing process
- Coding information is automatically attached based on the customer's preferences
- Extract data for the accounting system

TIS Logistics enables digital flows

PipeChain is an experienced systems vendor within transport administration that offers:

- A total solution for the entire transport chain
- A customisable solution with optional modules
- A user-friendly interface
- Clarity and structure
- Uniform and correct business flows
- Accessible advice and support!



