

A hand is shown holding a glowing, translucent globe. The globe is covered in a complex network of lines and nodes, representing a digital or data network. The background is dark with bokeh light effects in various colors (blue, green, yellow, red).

**Supplier portal for better
business benefits**

Are your business flows automated?

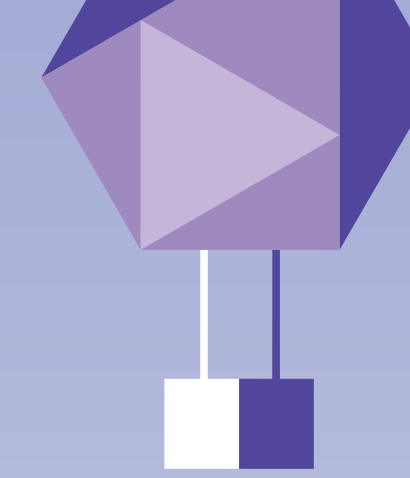
Manual order management is associated with both costs and risks, including:

- Inefficient use of purchasing organization resources
- The human factor can lead to entry errors
- Inadequate data creates additional work



Supplier portal works for all companies

Are all your customers and suppliers ready for full integration? If not, an EDI portal is a flexible solution when it comes to automating business flows, no matter what size the trading partner. The portal is tailored to accommodate your process.



This is a supplier portal

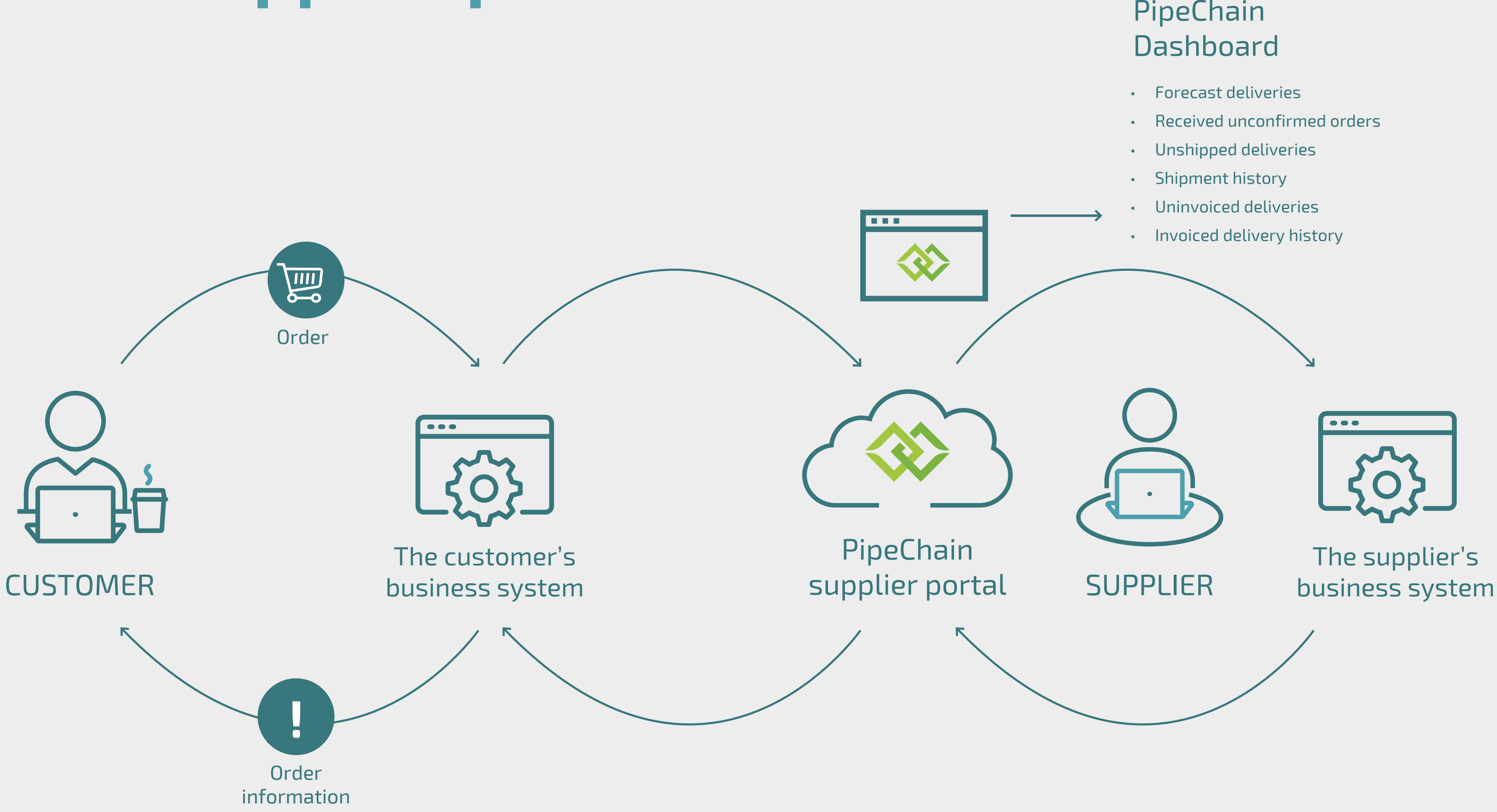
A portal has many names; depending on the context in which it is used, it may be called an EDI portal, a supplier portal or a digital meeting place.

The supplier portal is:

- An interface between two trading companies
- Here business is generated and managed in a standardised format
- All data is sent automatically to the business systems



PipeChain supplier portal



Advantages of a supplier portal

A portal creates better business benefits, such as:



Less manual work frees up time from purchasers – increased efficiency



Automated flows reduce the risk of errors – increased quality



Easier to compile product information – increased clarity



Available round the clock – increased accessibility



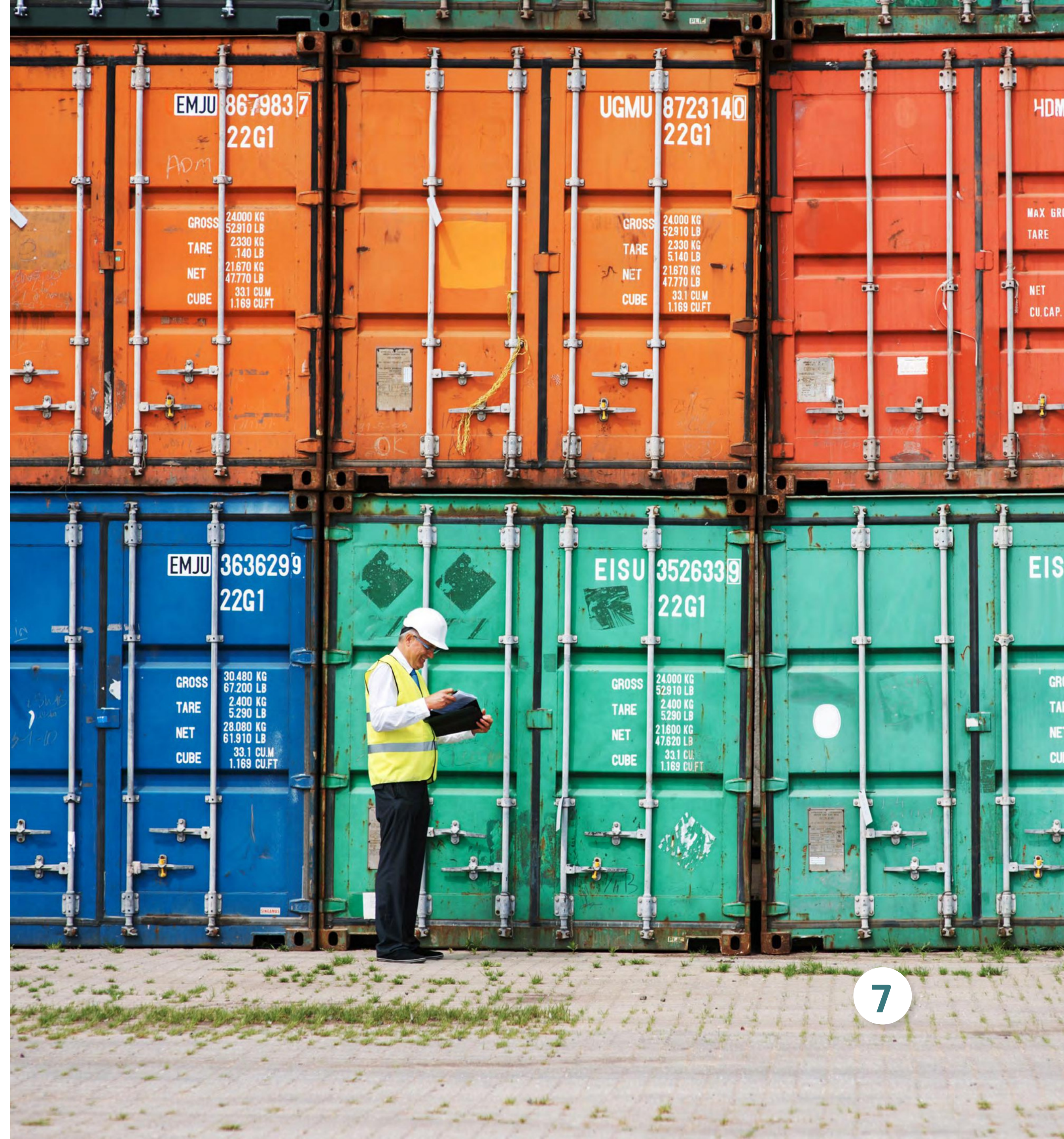
Simplify multi-sourcing – improved delivery accuracy



Supplier dashboard

Provides the supplier with a clear picture of current status and what is expected:

- Forecast deliveries
- Received unconfirmed orders
- Unshipped deliveries
- Shipment history
- Uninvoiced deliveries
- Invoiced delivery history



Forecasts and delivery schedules

Provides the supplier with the opportunity to manage forecasts, delivery schedules and Just In Time deliveries:

- Helps the supplier to differentiate between forecast and order
- Creates conditions for the supplier to deliver Just In Time
- Based on this information, the supplier can easily export needs for use as data for its production planning

Order and order response

Provides the supplier with efficient order management by, for instance:

- Sending notifications when an order is received
- Issuing automatic reminders if the order has not been processed in the allotted time
- Making it easy to generate data for production planning
- Enabling the supplier to quickly and efficiently flag up discrepancies
- The order is the basis for the order response, only discrepancies are indicated



Transport management

In cases where the orderer is responsible for freight, a direct link is offered to the customer's forwarding agents.

- Steers the supplier towards the right carrier and service
- Helps the supplier to book freight and generate the correct freight documents and labels
- Track and Trace information enters the flow automatically





Outbound delivery

Provides the supplier with the conditions to manage the delivery process by, for instance:

- Providing an overview of scheduled deliveries
- Sending despatch advice, based on order response, order or delivery schedule (Only discrepancies are indicated)
- Providing printouts of delivery documents and labels as per the customer's unique requirements.
- Enclosing material certificates or other documents with the delivery
- Option to add Track and Trace information to the delivery

Invoicing



Provides the supplier with data for efficient and correct invoicing by, for instance:

- Providing automatically generated data based on what was delivered
- The supplier only has to add any costs for packaging and transport fees, which streamlines the invoicing process
- Coding information is automatically attached based on the customer's preferences
- Extracting data for the accounting system

PipeChain supplier portal enables digital flows

PipeChain is an experienced systems vendor within integration and EDI portals that offers:

- Rapid and seamless implementation
- An adaptive solution
- A user-friendly interface
- Clarity and structure
- Uniform and correct business flows
- Accessible advice and support!



